



Garden Club of New Jersey

News Leaf

Contents

Meet Your District Directors	3
Second Annual Leadership Workshop/2017 Flower Show	4
Environmental Studies Schools	5
Landscape Design Schools	6
Gardening Studies Schools	7
Winner of NGC High School Essay Contest	8-9
GCNJ Judges Credentials	10
NGC Life Membership	11
Rutgers Gardens Centennial Anniversary	12-16
Awards Presented at GCNJ Annual Meeting	17-19
2015-2016 Yearbook Awards	20
Our Environment: Conserving Water	21
2016 Scholarship Awards	22-23
Tricyrtis: Tantalizing Toad Lilies	24
New Butterflies & BeeGAP Project	25
New Blue Star Markers	26
Be Part of the Drumthwacket Story	27
Calendar of Events	28-29

Deadline for next issue is October 1, 2016, covering November, December and January.



President's Message

*"I hope I can be the Autumn leaf
Who looked at the sky and lived.
And when it was time to leave,
gracefully, it knew life was a gift."*

-Dodinsky



It has really been a year of celebration in the Garden State. The New Jersey Department of Agriculture reached its 100th Anniversary and Rutgers Gardens, home to our state Headquarters at Holly House, celebrated its Centennial on May 17. **Haddonfield Garden Club, the oldest in our State, celebrated its 110th Anniversary.** Congratulations to all and we look forward to many more years of growth with you!

It has been a little over a year since this President's Theme, "YOUTH LEAD THE WAY", became a challenge as our garden clubs were asked to engage our younger generation in activities in nature. I have traveled nearly seven thousand miles across New Jersey my first year and have rejoiced in your commitment to make Youth a key point in your planning. You have taught good ecology practices in libraries; safe habitats for frogs and other backyard critters were encouraged in schools and you have assisted youth in school and community gardens.

Now the next step: **Have you heard about The Youth Initiative?** Its objective is to seek starter YMCAs to plant Square Foot Youth Gardens and engage garden club members to mentor youth.

News Flash: Next year's Annual Meeting will see monetary awards being given to garden clubs that have developed a 'New' project to engage youth with nature. Applications for this award will be on GCNJ's website. Also, September will bring our GCNJ raffle that will help fund both youth activities and the Youth Monetary Awards. **Get your clubs buzzing about youth! Pollinate youth activities and watch our garden clubs grow!**

Our first Leadership Workshop at Rutgers Gardens last fall was extremely well received and this September 9, we will offer a second

continued on page 2

**SEND ALL
EMAIL ADDRESS CHANGES
TO:**
Maureen Collins at
13 Trafalgar Place
Shrewsbury, NJ 07702
or email
collins_mbc@yahoo.com
or call 732-275-7162.

Advertising in News Leaf

If you have any questions concerning current advertisers in News Leaf or if you know of a business or garden club that wishes to advertise in News Leaf, please contact Alison Stellita at alisongcnj@gmail.com or call 848-448-3162.

FALL 2016

VOL. 77, No. 1

Member of the
National Garden Clubs, Inc. (NGC)
www.gardenclub.org
Central Atlantic Region (CAR)
www.ngccar.org

THE GARDEN CLUB OF NEW JERSEY, INC.
Holly House (732) 249-0947
website: www.gardenclubofnewjersey.com
126 Ryders Lane, E. Brunswick, NJ 08816-1331

President – Susan O'Donnell
209 Johnson Road
Whitehouse Station, NJ 08889-3311
908-489-2127
greenthumbsfo@gmail.com

NEWS LEAF (ISSN 0028-9213) is published quarterly by the Garden Club of New Jersey, Inc. (non-profit organization) 153 First Ave., Atlantic Highlands, NJ 07716; Fall (Aug.), Winter (Nov.), Spring (Feb.), Summer (May).

Deadline	Issue	Months
October 1, 2016	Winter	Nov.-Dec.-Jan.
Jan. 1, 2017	Spring	Feb.-March-April
April 1, 2017	Summer	May-June-July
July 1, 2017	Fall	Aug.-Sept.-Oct.

Before Deadline: Send copy by mail or e-mail to Editor listed below. All copy subject to cut/change. **News Leaf is not responsible for any copy or advertising submitted or printed.**

Editor – Ruth Korn
85 Fish Hawk Drive, Middletown, NJ 07748
e-mail: ruthkorn@verizon.net 732-671-4410

Advertising Manager
Alison Stellita
111 Lonny Court, Toms River, NJ 08753
e-mail: alisongcnj@gmail.com

Editorial Staff: Gloria Bandarenko, Nancy Canade, Patricia Dyguski, Elizabeth Lilleston, Joanne Mallon, Colleen Muldowney, Kathy Pojawa

President's Annual Message (continued)

and different **Leadership Workshop** called, “What’s in it for You?”. It is open to all GCNJ members, so please register early so that one of the 150 seats is yours. The registration form is available on our website.

Rutgers Gardens and GCNJ have teamed up to offer a spring and autumn workshop named, “**Digging It at Rutgers Gardens**”. This November we will tour the beautiful grounds of Rutgers Gardens and study “Trees in the Landscape”. In the spring of 2017, garden club members and guests will learn seed starting in a greenhouse, instructed by Bruce Crawford, Director of Rutgers Gardens. Sign up for one of the workshops and spread the word to other members of your club. It is a WIN/ WIN for Rutgers Gardens and GCNJ! The registration form for these workshops will also be available on our website.

In 1944, the Blue Star Memorial Highway Project, that honors our veterans past, present, and future, originated in New Jersey. Did you know that there are almost 3,000 Blue Stars across the United States? Interlaken Garden Club dedicated a Blue Star in 2015; two more dedications are planned for November with an additional pair of memorials in early stages. The Blue Star Council's goal is to have a Blue Star Memorial in every county in our state. Has your club considered a Blue Star Memorial to honor your community's veterans? It's a worthy project.

The Garden Club of New Jersey is proud to announce that the 2021 National Garden Club Convention will be held in New Jersey where our own Mary Warshauer will become the President of the National Garden Club. We are most aware of Mary's accomplishments and want to support her at this event. It will take all 107 clubs and 4,425 club members to make this happen so plan on being part of the support team. We have approximately five years to prepare and get ready for a wonderful convention.

A big round of applause for Jolyne Dalzell and her team for successfully organizing the Annual Meeting at the Bridgewater Marriott on June 9. Those that attended were inspired by the program presented by Kirk Brown as Frederick Law Olmsted. The boutiques were excellent and there was a bounty of awards announced by Awards Chair, Cecelia Millea. Thank you to all who helped to make this event a success. I very much appreciated seeing all of our members who attended this function.

Thank you for your support during my first year that I have served as your President. I look forward to receiving more invitations to attend meetings at your clubs so that I can then share your accomplishments throughout the state.

Warmest regards,

Susan

Susan O'Donnell

“To forget how to dig the earth and to tend the soil is to forget ourselves.”
Mahatma Gandhi



MEET YOUR DISTRICT DIRECTORS



Linda Williams
Skylands-District 4

While doing one of my part-time jobs of watering plants, I came across this group of women doing a floral design workshop. I went to the church office to inquire about these ladies. I was told that they were the Community Garden Club of Hunterdon County and that they met there monthly. I went to the next meeting and joined them in December, 2003.

Our club has a history of doing big flower shows over the years. I immediately became excited about the shows and started going to Flower Show Schools to become a judge.

Once the ladies heard I was the President of the PTA, I was elected to the board and

became the Club President for the 2008-2010 cycle.

I also became interested in becoming a Master Gardener, but couldn't afford to spend my time on the volunteer hours. So I took Gardening Study Schools and became a consultant in 2013.

With our Susan O'Donnell becoming New Jersey State President, our elected board had to make a few quick changes. I was elected for a second term as President, which just ended in June.

In the fall, I plan to continue my studies with Landscape Design Schools and hope to become a consultant there as well.

I've been asked to be District Director before, but the timing just wasn't right. I look forward to meeting all the clubs in District 4 and to be available to them for all their needs.

Linda Williams
mike.linda1@att.net

Jeanette Leeds
Delaware
Valley District 7



I attended the Haddonfield Garden Club's 110th Anniversary Luncheon with my husband, David, and Susan O'Donnell, our State President. We have been members of the Haddonfield Garden Club for ten years and I am currently beginning my second year as Director of District 7. I am really looking forward to assisting the fourteen clubs in my area as well as joining them in their activities. Hope to hear from you.

Jeanette Leeds
drleeds@netzero.net



Marina Kerber
Shore-District 8

I am the new District 8 Director as well as the President of the Navesink Garden Club, a National Garden Club Accredited Judge, a Monmouth County Master Gardener and a member of Floralia, Chapter 22. I am also a member of Ikebana International and Sogetsu, New York Chapter. I've "failed retirement" several times and will be teaching an AP English class at a private girls' school in September.


Marina Kerber
Marina2thebeach@yahoo.com

Flower Pounding
Learn the ancient Cherokee art of flower pounding

Workshops 1 1/2- 2 hours

No need to be an artist to create a beautiful piece

Contact Carol
creationation@comcast.net
609-448-8250/908-313-9029



**Washington Township Historical Society
Annual Historic Tour**
October 1, 2016--11am to 4pm
\$20 before tour/\$25 day of tour
Contact Museum at 908-876-9696
Visit website at www.wthsnj.org



SECOND ANNUAL LEADERSHIP WORKSHOP

Coming up soon
“WHAT’S IN IT FOR YOU”

REGISTER NOW for the second annual **Leadership Workshop** - scheduled for *Friday, September 9, 2016*. It’s a full morning of interesting activities and informative speakers that will surely help to make your garden club run more successfully. This is open to all club members, because leadership skills are for everyone and anyone can be a leader.

Deadline to register:
Wednesday, August 31

It’s all happening at the Log Cabin located in the beautiful Rutgers Gardens, 126 Log Cabin Road, East Brunswick. The format is the same as last year, now with new material and more interaction between clubs. Tours of Rutgers Gardens will be available to you after the workshop. Bruce Crawford will also be on hand to provide wonderful plants for sale and sage advice on their care that will undoubtedly add to the day’s value. So, even if you attended last year’s session, sign up for this one. There’s always more to learn.

The workshop is about developing the keys to leadership, uncovering your hidden talents as a leader and focusing on practical strategies for a successful garden club. It highlights how the Garden Club of New Jersey can and should be a resource you can use to answer your questions and provide the information you need. Registration forms can be found on the GCNJ website or can be obtained from Joan Lippi, joanlippi@gmail.com. There is a maximum of 150 participants and a small fee of \$10 is charged to defray the cost of materials.

Joan Lippi
732-742-3573

GCNJ STANDARD FLOWER SHOW – PLAN NOW TO PARTICIPATE

The 2017 Flower Show has new dates and a new twist. The dates are Thursday thru Sunday, February 23 to 26, 2017, after Valentine’s Day and Presidents Day Weekend, a departure from years past.

What’s new? This year, The Award of Distinction is a top exhibitor award for a design of all dried materials. Cool! Now you can use all those branches, pressed blossoms and other dried materials stuffed in your basement for a hanging design, freedom of style, or creative design staged on a table.

Also new:

- A Themed Garden (aka a fairy garden)
- Petite designs with blacklighting
- A pot-au-fleur.

Three club competitions are offered:

- Horticulture – a display
- Design – a banquet table setting
- Special- Anderson window gardens.

Air plants will return, perhaps with a different staging.

NOTE: Purchase your houseplant by Wednesday, November 23, 2016, to meet the 90 day growing requirement for plants. While you are buying the turkey and flowers for the Thanksgiving table, pick up a fern, Norfolk Island Pine, begonia, etc. Special sections of photography, pollinator gardens and youth are waiting for your creative ideas.

Amaryllis Bulbs are available. The Flower Show Committee is offering extra-superior bulbs by advance orders in October. Order for your club and raise some extra money along with the holiday blossoms.

Joan Lippi and Pat Bowker are the general chair and vice-chair. We’re happy to answer any questions. Contact us at joanlippi@gmail.com and/or kellys-aunt.pb@gmail.com



INSTRUCTORS

Dr. Jean Marie Hartmann, Honors College
Fellow and Associate Professor, School of
Environmental and Biological Science, Rutgers
University

Johnny Quispe, graduate student, Rutgers
University

Dr. Myla Aronson, Visiting Research
Scholar, Rutgers' University Department
of Ecology, Evolution and Natural
Resources

Directions to Agriculture Museum, College Farm Road:

From the North or South – Take the NJ Turnpike
to Exit 9 (New Brunswick) follow the signs to
Route 18 (North). Route 18 North to US 1 (Exit
South toward Trenton). Take third exit (College
Farm Road). End of exit ramp make Right onto
College Farm Road. Agriculture museum is on the
Right with parking behind the building.

Environmental Studies Schools are open to all garden club members and non-members

Anyone wishing to become an Environmental
Consultant accredited by NGC, Inc. must com-
plete all four courses and pass an open book exam
following each course.

ESS Mission is to teach environmental literacy to
cherish, protect and conserve the living earth.
Environmental literacy is a learning process
concerned with the interrelationship within and
between the various components of the natural and
human-made world producing growth in the
individual and leading to responsible stewardship of
the earth.

Rutgers Master Gardeners

Attendance on Thursday earns 4.0 CE hours.
Attendance on Friday earns 2.0 CE hours.
Attendance on both days earns 6.0 CE hours.



Paula Ringer

ENVIRONMENTAL STUDIES SCHOOLS “THE LIVING EARTH”

SERIES I, COURSE IV

September 29-30, 2016
Agriculture Museum of NJ
103 College Farm Road
East Brunswick, NJ



NATIONAL GARDEN CLUBS, INC.

Sandra H. Robinson, President
Patricia Rupiper
Environmental Studies School Chair

THE GARDEN CLUB OF NEW JERSEY, INC.

Susan O'Donnell, President
Louise Davis
GCNJ Environmental Studies School Chair

Sponsored by

Garden Club of New Jersey

Thursday September 29, 2016

- 7:30 a.m. Registration and coffee
ECC College Farm Road
- 8:00 a.m. Welcome and Introduction
- 8:15 a.m. Ecology-Water
- 9:15 a.m. Plants-Aquatic Plants
- 10:15 a.m. Break
- 10:30 a.m. Wetlands
- 11:30 a.m. Lunch
- 12:00 p.m. Wildlife-Aquatic Animals
- 1:00 p.m. Environmental Science
- 2:00 p.m. Break
- 2:15 p.m. Nature Discovery Field Trip
- 4:30 p.m. Wrap-up

Friday, September 30, 2016

- 7:45 a.m. Registration and coffee
- 8:00 a.m. Welcome and Introduction
- 8:15 a.m. Earth Stewardship
- 9:15 a.m. Youth Programs
- 10:15 a.m. Break
- 10:30 a.m. Forests in NJ wetlands
- 11:30 a.m. Lunch
- 12:00 p.m. Exam

Exam-

For more information please contact:
ESS State Chair, Louise Davis,
106 Old Denville Rd, Boonton Twp., NJ 07005
973-402-4043/ ldavis106@gmail.com

Required Reading

The National Gardener (1 year) 4 issues/year
One-year Subscription \$6.50
Order from Member Services NGC, Inc.

Living in the Environment – G. Tyler Miller, Jr.
Available from NGC, Member Services, the internet
and bookstores. You will need the Seventh Edition
or later. Chapters to be read follows:

Seventh Edition: 3,13,17,18,22,24
Eighth Edition: 3,13,17,18,23,25
Tenth Edition: 8,10,11,18,19,26,27
Eleventh Edition: 8,10,11,13,17,20,27,28
Twelfth Edition: 1,4,7,13,15,19,20,24,26,27,28
Thirteenth Edition: 1,4,7,14,19,24
Fourteenth Edition: 1,3,7,8,14,15,19,22,26,27
Fifteenth Edition: 1,3,6,10,12,13,14,17,18,19,21,24
25,27
Sixteenth Edition: 1,3,4,6,7,8,9,11,13, 20,22, 23,24,25
Plus Supplements: 3,4,7,8,9,11,12 Glossary
Seventeenth Edition: 1,8,11,13,24, Glossary

Vocabulary List

Aquaculture, bacteria, Clean Water Act 1977,
commercial extinction, consumerism, coral
reefs, cultural eutrophication, drainage basin,
dredge spoils, economic system, estuary, Federal
Water Pollution Control Acts 1972, 1978
groundwater, infiltration, inland wetlands,
leaching, National Wild and Scenic Rivers Act
1968, non point source pollution, polychlori-
nated biphenyls (PCVB's), recharge, riparian
rights, surface water, thermal pollution, water-
shed.

ENVIRONMENTAL STUDIES SCHOOL SERIES I, COURSE IV September 29-30, 2016 REGISTRATION FORM

Name _____

Address _____

Phone (____) _____

E-mail _____

Garden Club _____

____ \$ 105.00 Course Fee-exam extra
____ \$ 60.00 Thursday
____ \$ 60.00 Friday
____ \$ 5.00 Exam or Refresher Fee
____ \$ 10.00 Thursday Lunch
____ \$ 10.00 Friday Lunch

Total Registration Enclosed \$ _____
Make check payable to Garden Club of New Jersey
Mail registration form and check to
(ESS Registrar):
Chris Endris
306 Main Street
Lebanon, NJ 08833
908-832-6303
chrisendris@gmail.com
No Refund after September 15, 2016.

____ Please send Lodging Information.





Landscape Design School
October 18 & 19
Optional Exam on October 21
Course IV, Series XVII

Join Bruce Crawford, Kirk Brown and Dr. Randi Eckel for another informative and enjoyable series of classes:

- ✓ Development of Landscape Architecture from World War II to Present
- ✓ Contemporary Landscape Design
- ✓ Designs for the Future
- ✓ Redesign of Areas
- ✓ Community Gardens
- ✓ Evaluating the Landscape Designs of Residential, Public and Business Property
- ✓ Landscaping for Wildlife

For the Registration Form and additional information, click on the GCNJ website:
<http://njclubs.esiteasp.com/gcnj/home.nx>

Alice Dickson
 Landscape Design School Chair
Aliced922@gmail.com



GARDENING STUDY SCHOOL
Course III . . . Series VIII
SAVE THE DATE ~October 4 & 5

Tuesday & Wednesday (Classes)
Sign up for Tuesday or Wednesday or Both
October 7, 2016 Friday (Optional Exam)

Master Gardeners--
earn 10 CEUs for taking the 2 day course

The 2016 course will consist of the following classes:

- **Pruning Techniques – A Hands-On Class**
- **Techniques for Growing Outdoor Flowers**
- **Teaching Tour of the Greenhouses at Cook College**
- **Influencing Plant Growth – Environment vs Heredity**
- **Plant Taxonomy and Classifications**
- **Rain Gardens – Environmental Importance, Planning, Maintaining**

Held at Holly House, 126 Ryders Lane,
 East Brunswick, NJ 08816
 Beverly Kazickas, GSS Chair
 Ellen Preissler, GSS Registrar

For more information, please check the GCNJ website at www.gardenclubofnewjersey.com



Instructors

Bruce Crawford

Director of Rutgers Gardens since 2005 and adjunct professor in the Landscape Architecture Department at Rutgers University. As Director of Rutgers Gardens, Bruce oversees a 180 acre outdoor teaching classroom, horticultural research facility and arboretum.

Lena Struwe

Professor of Plant and Evolutionary Biology at Rutgers University as well as Director of the Chrysler Herbarium. Lena is internationally recognized for her recent identification of a tropical flower trapped in amber 15 million years ago.

Christopher Obropta

Professor in the School of Environmental Sciences at Rutgers University. Chris is known for his extensive knowledge of stormwater management, watershed design, and innovative solutions to water quality problems.

Judy Glattstein

Popular instructor at The New York Botanical Garden and Cook College of Rutgers University. Judy is the author of 8 garden books.

Nicki Graf

Research Farm Supervisor at the Floriculture and Teaching Greenhouse on Cook Campus, Rutgers University. Nicki teaches in the Plant Biology and Pathology Department.

Purpose and Goals

- To create increased interest and knowledge in gardening, horticulture and design.
- Garden club members successfully completing the series of four courses are awarded the designation of Gardening Consultant.
- Attendees from the general public may attain Consultant status by joining a garden club during the course series or shortly after completion.

GENERAL INFORMATION

Gardening Study Schools Course III is the third in a series of four courses. Attendance is open to all garden club members, master gardeners and guests. To receive full credit for certification, one must attend the two-day course at the cost of \$95, pass the written exam on Friday, October 7, be an active garden club member, and fulfill the required reading. The exam is optional for those who are attending for enrichment only.

Front seats will be reserved for students taking the course for credit. Students must have their attendance card punched at the beginning of each session and may not leave until the conclusion of the class to receive full credit. Students should bring their own supplies, i.e., pen, pencil, notepaper, etc.

DIRECTIONS TO HOLLY HOUSE

From Garden State Parkway, North: Take Exit 129 to NJ Turnpike South (Trenton). Take Exit 9 (New Brunswick) onto US 18N, quickly exit onto US 1 South then continue as below *

From Garden State Parkway, South: Take Exit 130 to US 1 South * Exit right onto Ryder's Lane via the jug handle under the overpass. Immediately move into the left lane to make the 1st left turn onto Log Cabin Road. Turn and follow the signs to Holly House.

From NJ Turnpike: Take Exit 9 (New Brunswick) onto US 18N, quickly exit onto US 1 South then continue as above *

Please note that if you are using either a GPS or online mapping service the directions may be wrong when using our Ryders Lane address. Please use 130 Log Cabin Road, New Brunswick, NJ 08901 as the address.

GARDENING STUDY SCHOOLS

Course III

Series VIII

October 4, 5 & 7 (exam), 2016

Holly House

126 Ryders Lane

East Brunswick, NJ 08816



NATIONAL GARDEN CLUBS, INC.

Sandra H. Robinson, President

Barbara Hadsell, Chairman
Gardening Study Schools

THE GARDEN CLUB OF NEW JERSEY, INC.

Susan O'Donnell, President

Beverly Kazickas, GSS Chair
201-321-7004
kazickas5@aol.com

Ellen Preissler, GSS Registrar
732-530-9335

67 Obre Place
Shrewsbury, N.J. 07702

ellepreissler@yahoo.com

Please keep a copy for your records.

PROGRAM

Tuesday, October 4

- 9:00 a.m. Registration
- 9:30-9:45 Welcome and Announcements
- 9:45-11:45 Influencing Plant Growth (Glattstein) 2 hours
- 11:45-12:30 Lunch
- 12:30-2:00 Pruning Techniques - Hands On Class (Crawford) 1 1/2 hours
- 2:00-2:15 Break
- 2:15-3:45 Rain Gardens - Planning, Planting, and Maintaining (Obropta) 1 1/2 hours
- 3:45-4:00 Review & Wrap Up (optional)

Wednesday, October 5

- 9:00 a.m. Registration
- 9:30-9:45 Welcome and Announcements
- 9:45-11:15 Growing Outdoor Flowers (Crawford) 1 1/2 hrs
- 11:15-11:30 Break
- 11:30-1:00 Plant Taxonomy/Classify (Struwe) 1 1/2 hours
- 1:00-1:30 Lunch
- 1:30-3:30 Teaching Tour of the Greenhouses (Graf)
Class held at Cook College - 2 hours
- 3:30-4:00 Review & Wrap Up (optional)

Friday, October 7

Optional Exam

- 9:30 a.m. Registration
- 10:00-noon Test (optional)

RECOMMENDED READING

FOR COURSE III

(Required if Taking Exam)

The National Gardener (official publication of the National Garden Club) - 4 issues per year

Subscription is available from the NGC, Inc.
website: www.gardenclub.org

Please allow sufficient time for delivery

For More Information Visit:

<http://njclubs.esiteasp.com/gcnj/home>

Master Gardeners receive 5 CEU per day.
Earn a total of 10 CEU for the 2 day course.

Courses cover all aspects of growing from understanding soil structure to pruning techniques, plant identification, etc. Topics include basic botany, soils, growing annuals, perennials, trees and shrubs, fruits and vegetables, lawns, pests and diseases of plants, plant classification, pruning and selected topics of local interest.

HOTEL ACCOMMODATIONS

Days Hotel

195 Highway 18 S, East Brunswick, NJ 08016

Tel: 732-828-6900

Email: sales@dayshoteleatbrunswick.com

Ask for Alex at ext 617, for special rate of \$75.95 plus tax. Please mention Garden Club of New Jersey and include the GSS dates.

REGISTRATION FORM

GARDENING STUDY SCHOOL, COURSE III

October 4, 5 & 7 (exam), 2016

Name _____

Mailing Address _____

Phone _____

Email _____

Local Club _____ Dist# _____

Master Gardener: yes/no County _____

Pre-Registration Deadline September 27, 2016

Course Fee (Two Days) \$ 95.00

One Day Fee (Tuesday or Wednesday) \$ 50.00
(circle day attending)

Club Special (Limit "One" per Club)
*Two people may attend both days \$160.00

Additional Fees:

Exam Fee for Credit (optional) \$ 5.00

Refresher Fee (consultants only) \$ 5.00

Lunch on Tuesday (optional) \$ 12.00

Lunch on Wednesday (optional) \$ 12.00

Cancellation Fee \$ 10.00

Late Fee after September 27 \$ 10.00

Total Enclosed \$ _____

*Please list other student name:

MAKE CHECKS PAYABLE TO GCNJ

Mail registration form and check to:

Ellen Preissler, Registrar
67 Obre Place, Shrewsbury, N.J. 07702

Please keep a copy for your records.



Winner of NGC High School Essay Contest in 2015

Jacqueline Unger, Grade 10

Southern Regional High School

Ship Bottom, NJ

Submitted by The Garden Club of Long Beach Island

Don't Let the Frogs Croak



Greg the Frog: Hi Gracie, how are you doing today?

Gracie the Frog: I just heard terrible news on the Toad Day Show. Al Croaker said that amphibians are the most endangered group of animals on Earth. According to Animal Planet, frogs are in a perilous condition with 170 species lost in the last 10 years.

Greg: Wow! I guess I wasn't imagining that there were fewer relatives at our last family reunion.

Gracie: It's only going to get worse because there are so many problems. Climate changes are causing many habitats to dry up. The frog neighborhoods have to move further up the mountainsides so they can find places with enough moisture to lay their eggs. What is going to happen to them when everything dries up?

Greg: You're right. This sounds serious.

Gracie: It is serious Greg! My favorite swamp just got drained, the forests are getting cut down and the dammed river is preventing me from getting good water. Frogs everywhere are losing their access to important resources like food, water and shelter. Every year, millions of frogs get taken from

their homes to be used in lab dissections, as pets, bait, or eaten for food! People love to eat our legs!

Greg: Well, I mean...I know I look delicious and all, but my legs are mine. No one else can eat these babies.

Gracie: I think you're missing the point. If the frog population dies off, the world is in for some big issues.

Greg: Obviously! It'd be a sin to kill something as good-looking as me.

Gracie: It would be a sin to let your head get any bigger. Frogs really are important though. Here, let me explain. Frogs eat a large quantity of insects, including those that can transmit fatal diseases like malaria. The mosquitoes actually happen to be one of my favorite snacks to eat. Not only do we help with eating deadly disease-carrying bugs, but we also help with medical advancement. Many frogs can produce skin secretions that have potential to improve human health. The secretions can be used as pharmaceuticals and protect from drug-resistant microbes. Humans need the frogs in order to stay healthy, even though they will rarely admit it.

Greg: Wait: so let me get this right. Humans need us so they can stay healthy.

Gracie: Yup! Helping humans isn't the only thing that the frogs do, either. I still have a lot more to tell you about how important we are. Frogs are thought to be accurate indicators of environmental stress. The health of the biosphere can be indicated by the health of frogs. That's because we frogs have permeable skin which easily absorbs toxic chemicals. It makes us much more susceptible to changes and disturbances in the environment.

Greg: So we warn humans when things aren't right with the environment?

Gracie: That's right! We clean the environment too.

Greg: Whoa, whoa, whoa, we clean the environment?



continued on page 9

Gracie: You probably can't remember being a tadpole since it was so long ago for you. As tadpoles we fed on the algae to



keep the waterways clean and we filtered the drinking water too.

Greg: Does that mean that when my mom says I didn't do my chores when I was younger I can

say that I cleaned the water?


Gracie: I don't think it works that way, but if it did, then frogs should get an award. While the tadpoles keep waterways clean and water filtered, adult frogs serve as important meals for a wide range of predators. We are such an integral part of the food web that if our population was to become extinct, the entire web would be in trouble. Negative effects would ripple throughout the entire ecosystem.

Greg: I never realized how much our existence really mattered to the rest of the world. I always thought we just looked and sounded really cool. I guess it goes a lot deeper than that.

Gracie: It does, but that doesn't mean we don't still sound cool. Our voices are lovely as long as people don't let us croak.



FROGS



**10 ACRES
LOCATED IN
CHESTER, NJ**

**FILLED WITH THE
USUAL TO THE
UNIQUE**

**IF WE DON'T
HAVE IT, WE WILL
TRY AND FIND IT**

**GARDEN CLUB MEMBERS RECEIVE 15% OFF ANY
PURCHASE FOR YOUR CLUB OR YOURSELF**

WWW.PLANTDETECTIVES.COM

"We're Serious About Horticulture"

HOCH'S

GARDEN CENTER

Trees, Shrubs, Perennials, Annuals & Pottery
Landscape Supplies, Mulch & Mushroom Soil
Premium Bird Seed, Bird Feeders & Gift Shop

609-361-4310
229 S. Main St. (Rt. 9)
Barnegat, NJ

www.HochsLandscaping.com



GCNJ Judges Credentials

Congratulations to the eight GCNJ Accredited Judges who achieved Life Judge status as a result of refreshing at the GCNJ Thirty-Fourth Symposium on May 17-18, 2016, in East Windsor, NJ:

Tanya Ashuck, Louise Davis, Carol English, Jeannie Geremia, Peggy Koehler, Cecelia Millea, Gale Pluhar and Peggy Smith.

Congratulations also to Renee Waite who has achieved Master Judge status.

New Life Judges, current Life Judges who have already passed the first Symposium towards Master status and all GCNJ Judges are urged to attend the Symposium on October 26-27, 2016, following the Central Atlantic Meeting in Saratoga Springs, New York, at the Gideon Putnam Hotel. If taking the Symposium for credit, judges must submit the appropriate FSS 15 E to Judges Credentials Chair so that Eligibility Certification to attend the Symposium for credit may be sent to the New York Judges Credentials Chair in a timely manner. Registration forms and information on the hotel can be found on the Federated Garden Clubs of New York web site, www.fgcny.com under "Symposium".

Congratulations to newly Accredited Judges Joan Lippi and Patti Bowman.

Congratulations also to the two new Student Judges: Mary Warshauer and Alice Dickson.

Garden clubs planning to hold a flower show are kindly requested to contact the Judges Credentials Chair for the name of judges who need to participate in judging a Standard Flower Show for credit.

Jane Bersch
GCNJ Judge Credentials Chair
janebersch@aol.com

National Life Membership

Honor a Special Member

It is perfect for members who are GCNJ and CAR Life Members.
Treat yourself!

Purchase a National Life Membership

Cost is \$200.

Money benefits the Scholarship Fund and the
Permanent Home Endowment Fund.

As a National Life Member, you will receive the following:

National Life Membership Card

A lifetime subscription to The National Gardener

You may attend the National Life Member Banquet at all conventions.

The National Garden Club Life Membership Application is available on both the National Garden Club, Inc. Website and The Garden Club Of New Jersey Website under "Life Membership". Click on sites below.

www.gardenclub.org (NGC)

www.gardenclubofnewjersey.com (GCNJ)



National Garden Club, Inc.

Life Membership

New Jersey Life Members

Mrs. Fred Albee
 Onnolee Allieri
 Winifred Applegate
 Mrs. J. Battista
 Laine Beavin
 Jane Bersch
 Brenda Bingham
 Mrs. W. Blake
 Richard Bloomfield
 Mrs. G. Brightenback
 Doris Bryan
 Mrs. J. Buck
 Mrs. R. Cavanaugh
 Joan Chambreau
 Julia Clevert
 Rose DeSilva Colin
 Mrs. John Craham
 Florence Cudworth
 Mrs. R. Dally
 Patricia Dygulski
 Mrs. A. Elliot
 Mrs. John Evans
 Marie Louise Farshing
 Mrs. F. Finch
 Doris Fiske
 Mrs. J. Fleming
 Mrs. B. Freeman
 Rose Mary Freese
 Nancy Gahtan
 Mrs. F. Gallione
 H.W. Gander
 Mrs. H. George
 Jeannie Geremia
 Mrs. H. Gilman
 Mrs. R. Gordon
 Mrs. R. Green
 Deirde Gross
 Mrs. C. Grossi
 Mrs. F. Hartman
 Katharyn Haslach
 Katherine Haupt
 Mrs. Christian Heidt

Mrs. J. Heldrich
 Mrs. R. Hollasch
 Mrs. A. Holmes
 Carol Hulanick
 Mrs. Lewis Hull
 Mrs. H. Hunter
 Jacqueline Hunter
 Mrs. J. Imming
 Carole Iuso
 Alice Jarvis
 Beverly Jeck
 Carol Johnson
 Mrs. H. Kautz
 Gotti Kelley
 Mrs. Dean Kellogg
 Janet Kinney
 Dr. J. Kirk
 Joyce Koontz
 Carole Kurtz
 Donna Rose Kupper
 Doris Landre
 Adrienne Langan
 Mrs. R. Light
 Mrs. S. Litvack
 Mrs. K. Mann
 Mrs. E. Matthews
 Mrs. J. McBain
 Mary S. McCracken
 Mrs. W. McCarthy
 Mrs. W. McKiddie
 Mrs. M. McNally
 Mrs. McNeil
 Caron Menger
 Honorable Spencer Miller
 Vivian Morrison
 Louise Ann Mortorana
 Barbara Mullin
 Bonnie Nichols
 Ruth Olson Nicoll
 Susan O'Donnell
 Ruth W. Paul
 Mrs. K. Pflieger

Mrs. T. Piecara
 Madeline Ploetner
 Mrs. F. Rhodes
 Mrs. A. Sayre
 Dana Serafine
 Virginia Shen
 Mrs. F. Skvara
 Mrs. A. Stansbury
 Mrs. R. Tarbox
 Mrs. F. Terranova
 Mrs. J. Tharpe
 Mrs. J. VanderWende
 Mrs. MacLane VanDeusch
 Mrs. R. Walker
 Helen-Louise Waller
 Mrs. G. Walton
 Janet Warshauer
 Mary Warshauer
 Mrs. R. Westbook
 Mrs. Laurence Wilson.

Irene Saputo
 Life Membership Chair
itsaputo@aol.com



Rutgers Gardens Centennial Anniversary



On May 17, 2016, Rutgers Gardens celebrated its Centennial Anniversary. It celebrated the date when Jacob and Cecilia Lipman purchased the 35.7 acre Wolpart Farm and sold it to the University for \$1.00. This land now constitutes the current core of the Gardens, stretching from the Hollies down to Weston Mills Pond. Interestingly, it was not purchased with the intent of creating a public garden, nor was it purchased for the public to necessarily enjoy! It was purchased to create what became known as Horticulture Farm No. 1 (Hort. Farm1); a facility that would initially be dedicated to research in pomology (branch of botany that studies and cultivates fruit) and vegetables, with a small, 4-acre facility, dedicated to the display of ornamental horticulture. No one at that point could foresee what that original purchase was to yield, nor how the changing economy of the United States was going to so noticeably drive an increased interest in gardening and shape the future of this Farm!

Prior to the early 1900's, the majority of the US population resided in cities. Those that lived outside the cities spent most of their waking time either working or taking care of daily needs, such as getting water, cooking, fixing the home or mending clothing, feeding the horses and so on. After Hurricane Sandy, a number of people were shocked at how much time was spent conducting the menial chores that electricity and modern conveniences have eliminated from our daily lives. At the turn of the last century, NJ planners predicted suburban housing would spread across the Hudson and Delaware from NYC and Philadelphia respectfully. It was also foreseen that the middle class would grow, along with a generous amount of free time that the machine age would generate. This free time combined with the suburban sprawl all pointed to an increased demand for orna-

mental gardening and plants – a demand that the nursery industry in NJ could not support at that time. Hence, the creation of the 4-acre parcel, within Hort. Farm 1, dedicated to displaying woody shrubs along with various herbaceous plants that were popular or recently introduced at that time, such as Iris. Farmers ventured to the Farm to study the shrubs and herbaceous materials, with the thought that the growing demand for nursery crops could enhance their incomes. The balance of land for Hort. Farm 1 was dedicated to food crops and where the Holly Collection currently resides was dedicated to vegetable research. The area adjacent to the Bamboo Grove was for agronomy; and the balance of land by the Log Cabin eventually went into apple and peach research. The public was invited in when the Iris was in bloom, but the facility was not intended to be a public garden.

The original Director of the facility was Dr. Charles Connors and, most likely, in 1922, the first display area established was the Iris Garden (**pictured below**). The garden stretched from what is now Log Cabin Road back to a very neatly trimmed hemlock



hedge. Today that hedge is a row of 50' tall hemlock trees. It was cordoned off from what would become the shrub garden by formally pruned yew or *Taxus* hedges. The initial date of the planting of the shrub garden is unknown, but by the mid 1930's, it consisted of row upon row of woody plants for potential nurserymen to review.



The end of the 20's marked the beginning of the Depression, a time when one would think funding would limit any improvements at the Farm. Not true! The early 30's saw the creation of the Civilian Conservation Corp (CCC) under President Roosevelt. Unemployed gentlemen would enlist in the Corp and become established in camps where they would receive shelter, food and a stipend that would be sent back to support their families. In exchange, they constructed buildings to the benefit of the overall good!

On what is now the Cook Campus, the CCC barracks were established on College Farm Road and in the early 30's (prior to 1935), they constructed the facility that is now called Holly House. It had walk- in refrigerators in the basement and it was created to support the peach and apple research being conducted on Hort. Farm 1. They also constructed the small building that now sits at the back of the Sun and Shade Garden. The barn doors and the foundation blocks are identical to that of Holly House. Lastly, in 1935-36, the CCC built the Log Cabin. **The photo to the right and below** was taken in 1936. Holly House is in the mid to upper right and the Log Cabin is under construction in the upper left hand corner.

During the mid-30's, Mr. Ben Blackburn started to work at Hort. Farm 1 and he redesigned the Shrub Collection into its current form, with a large central space surrounded by shrubs. All the shrubs were arranged by their family, at least as was commonly thought at the time. In 1939 the plants were collected, grown on for several years in the adjoining nursery and installed during the early 1940's. What is most noteworthy about his additions was *Magnolia kobus* 'Larry' that now proudly stands

guard at the far end of the Shrub Garden (**pictured below in April 2015**). Its low branches reach out far and wide and have actually rooted where they have



touched the ground. It is also a tree upon which many a young child has sat. In fact, children led to the tree's name! During a children's tour in 2011, a Gardens intern named KC was leading a tour of sec-



continued on page 14



ond graders. When one of the inquisitive children asked what type of tree they were sitting upon, KC could not remember that it was a magnolia, and simply blurted out, “Larry”. **Funny how trees get their names!**

The late 1930's also saw the creation of the Rhododendron Garden diagonally opposite the Iris Garden. From a plant-breeding standpoint, Hort. Farm 1 served as the location for an incredible peach program during the 30's and the 40's that actually resurrected the peach industry in New Jersey. The peach farms had been decimated by the San Jose Scale. Through the work of Dr. Maurice Blake and Dr. Connors, new selections with much higher yields were developed, allowing the farmer to have smaller farms and more effectively battle the scale. Also during this period, the American Holly Society, located in Millville, NJ, thought it would be a boom to New Jersey Agriculture to develop a holly that would have the large glossy leaves and fruit of the English Holly, with the hardiness of the American Holly. This holly was not to serve the nursery industry, but the cut stem industry during the Thanksgiving and Christmas Holidays. To this day, cuts are brought in from Washington and Oregon State. The thought was to bring this industry to New Jersey growers, lowering the cost of delivery and, I might add, lowering the carbon footprint! Starting in the late 1940's and early 1950's, the current collection of hollies, then called the Holly Orchard, was amassed.

In 1955, the next major historical event occurred – Mr. Roy DeBoer came to Rutgers. He had just completed an undergraduate degree in Landscape Architecture from Cornell and was pursuing his Masters, evaluating how extending the day length with artificial light impacted plants. He worked at the Gardens until 1960, when he moved on to teaching and eventually developed the Landscape Architecture Program at Rutgers! Among his many contributions to the

Gardens was designing and installing the Evergreen Garden. The area that he chose was a depressed area across from the Rhododendron Garden. Evidently, it had been used as a borrow pit, an area where soil is mined for alternate uses. Roy designed it as an outdoor room with a Weeping White Pine serving as central point of interest. The plant material was donated by various nurseries throughout the state. In October of 1997, it was officially renamed the Roy DeBoer Evergreen Garden and on June 21 of this year it served as the outdoor room for the first annual Summer Solstice Wine and Jazz event (**pictured below!**)

As Mr. DeBoer was moving on to teaching, Dr. Elwin Orton was just arriving! The peach and apple research had been moved to other locations, and in July of 1960, Dr. Orton began his work of developing the dream holly for the American Holly Society. Although he actually missed the party that marked his arrival at the Farm, Dr. Orton did work tirelessly on not only crossing the hollies, but also conducted crosses on Japanese hollies, pyracantha, Benjamin Franklin tree and dogwoods. The crosses the Holly Society had hoped to see did not materialize, since the progeny were sterile. However, the crosses between the American and Chinese dogwoods yielded fantastic results and are much sought after by gardeners both in the US and abroad!



The early 1960's also saw the beginning of true budget constraints and in 1963, the end of the Iris

building to serve as their home base since the early 1960's. The architectural plans were originally drafted by Robert Green, husband of a GCNJ board member and member of the Headquarters Committee. Plans were finalized by Rutgers Architect Bertelson, with construction occurring during the fall of 1980.



Collection. The costs of digging and dividing the collection, not to mention weeding, had become excessive. In 1964, Donald B. Lacey, an Extension Specialist in Ornamental Horticulture proposed using part of this area as a display garden for annuals. He scoured the weather documents for July and determined that the last Saturday of the month was historically the least prone to rain. In 1965, the first Open House was held on that Saturday **(The image above is from 1967)** and it has been held annually on that date ever since, with at least no rainy days during the last 11 years!

Funding continued to be troublesome and although both Dr. Orton and Mr. Lacey continued their efforts through the 70's and into the 80's, the staff at Hort. Farm 1 continued to dwindle. One bright spot was on April 27, 1981. Rutgers officials and the GCNJ joined together to celebrate the official opening and dedication of Holly House as the GCNJ headquarters. The GCNJ had been looking for a

Having GCNJ Headquarters move into Holly House proved to be very fortuitous. For one, the building finally started to regain a true purpose, as it had largely laid vacant following the departure of the fruit research. Second, when rumors were raised about the sale of the Gardens in 1989, the Garden Club members, along with professors on campus, including Dr. Bruce Hamilton of the Landscape Architecture Department, rallied to save the land. The land was indeed saved, and with neither a budget from the University nor any employees, Dr. Hamilton became the next Director of the Gardens. Dr. Hamilton relied on the public through plant sales, donations and volunteerism to keep the Gardens going, and it was at this point that the Gardens truly became a Public Garden. It has never looked back.

In 2005, the Executive Dean's office of what was Cook College (now the School of Environmental and Biological Sciences) opted to fund the position of a full-time Director, and that was when yours truly came to the Gardens. In 2007, Executive Dean Bob Goodman declared that the current research land, along with Helyar Woods and the land along Route 1, was all to be public and part of Rutgers Gardens. The research component was gone and the days of Hort. Farm 1 were drawing to a close. The future of the Gardens will certainly be challenging, but it is full of optimism and great promise. The future mission of the Gardens will be to tell the story of plants and how they adapted and evolved during the changes in geology and geography of the planet over the past

continued on page 16



400 million years. A master plan is currently being developed to tell this story and one of the first projects to be tackled is the construction of a series of green-roofed, open-sided buildings at the entrance to the Gardens at Ryders Lane. This structure will serve the Rutgers Gardens Farm Market by providing protection from the elements, as well as serving as an entryway – leading people to the Visitors Center and beyond, into the Gardens. It will also be a visual indicator that this is indeed the entrance to Rutgers Garden! We are actively seeking donations to this project by December 2016 when a matching gift will come to a close. If you are interested in supporting this project, please contact the Rutgers Gardens office or the Vice Dean for Advancement, Melissa McKillip (mckillip@AESOP.Rutgers.edu) for further information.

Rutgers Gardens has witnessed 100 years of

change and development that has been shaped by a great number of scientists, horticulturists and general garden lovers. Today, the original 37.5 acre investment has grown to nearly 180 acres. 2016 marks the dawn of the next 100 years which will promise further changes and development to the Gardens – a Garden that will be a true Public Garden for all to enjoy, to share and from which, to learn.

Bruce Crawford is the managing Director of Rutgers Gardens, a 180-acre outdoor teaching classroom, horticultural research facility and arboretum; an adjunct professor in Landscape Architecture at the Rutgers School of Environmental and Biological Sciences; regularly participates in the Rutgers-Continuing Education Program and is the immediate past-president of the Garden State Gardens Consortium. 732-932-8451.



The Garden Club of Toms River
cordially invites you to a
**Blue Star Memorial Highway Marker
Dedication**
November 5, 2016 at 11 a.m.
Route 37 and Hospital Drive at the entrance to Winding River
Park
Toms River, New Jersey
Please reply by October 28th
Diana Halliwell, halliwell1@msn.com, (732) 262-8486 or
Linda Scarano-Senatore, sissalina@aol.com, (917) 829-0830

**The Dogwood
Garden Club
of Princeton**



**Holiday Luncheon
December 1, 2016**

Mercer Oaks Golf Club
Princeton Junction, NJ
Tickets \$50

**Speaker - Stephanie
Cohen**

RSVP: Doris Mapes
4544 Provinceline Road
Princeton, NJ 08540
609-921-3165
domapes@aol.com



Awards Presented at GCNJ Annual Meeting on June 9, 2016

(All Awards are GCNJ Awards unless so noted)



Allentown GC

#28 Membership
Award for highest
increase in members
(small club)

Basking Ridge GC

CAR 2015 Yearbook
Award (45-69 members)
1st Place

Belvidere GC

#14b Pinelands GC
Trophy
#27 Lillian Koelsch
Trophy

#42 Hanover GC Trophy
#52 GCNJ Special Award (Small club) \$200
CAR Civic Development/Improvement Award to a
small club \$100
CAR 2015 Yearbook Award (under 20
members) 3rd Place

Chester GC

#31 Basking Ridge GC Trophy
#52 GCNJ Special Award (medium club) \$200
NGC Certificate of Appreciation for Participation

Country GC

#15b Smoke Rise GC Garden Therapy Trophy

Deborah Moran, GC of Montclair

#17 Lenore Pletcher Trophy

Elizabeth GC

#16a Florence S. McNeil Membership
Participation Trophy (small club)
#53 Demarest GC Yearbook Trophy (small club)
Award for highest increase in members

GC of Long Beach Island

#13 Thomas Turner Cooke Memorial Trophy - Mary
Wilding
#25 Wyckoff GC Trophy
#35b Holly Club of Sea Girt Trophy (50 or
more members)
CAR 2015 Violet S. Thoron Award and
Certificate of Appreciation for Participation
CAR 2015 Yearbook Award (100-299 members) 2nd
Place
NGC Poetry Contest, Bernadette Fuessinger, New
Jersey (Grade 4) 1st Place
Schuyler Beutel, New Jersey (Grade 5) 1st Place
NGC Poetry Contest, Jackson Ruff, New Jersey
(Grade 6) 1st Place
NGC Sculpture Contest, Amanda Terzian,
NGC (Grade 4) 1st Place and New Jersey (Grade 4)
1st Place NGC Sculpture Contest, Gracie Vidal, NGC
(Grade 5) Certificate of Commendation and
New Jersey (Grade 5) 1st Place
NGC HS Essay Contest, Gabriella Muraczewski, New
Jersey (Grade 12) 1st place
NGC HS Essay Contest, Jacqueline Unger (Grade
10) 1st Place and NGC Overall Winner (\$1,000)
GCNJ HS Award #3 GC of Watchung Essay Contest
Award (\$100)
Jacqueline Unger

GC of Spring Lake

#59 Bernardsville
Garden Club Trophy

GC of Toms River

35a Holly Club of
Sea Girt Trophy
(under 50 members)
Youth Junior Award
#3a Certificate of
Merit



continued on page 18



Awards Presented at GCNJ Annual Meeting *(continued)*



GC of Westfield
#53 Demarest GC
Yearbook Trophy
(medium club)

Greater Woodbury GC
#44 Doris R. Galione
Collector's
Showcase Trophy –
Judi Bates
#18 Dorothy M.
Shick Trophy
NGC Award #57 for
a Standard Flower
Show in a Public
Building

Haddonfield GC

#41 Pines Lake GC Trophy
#49 Woodbridge GC Trophy

Karen Nash Memorial Butterfly Garden GC

Youth Junior Award #2a Anne De Roner Junior
Gardeners Horticulture Trophy
Youth High School Award #2 GC of Long Beach
Island Youth Award \$100
NGC Youth Garden Pollinator Award (Overall Winner)
\$75
NGC Smokey Bear/Woodsy Owl Poster Contest
Kylah Pauser, New Jersey (Grade 2) 1st Place
CAR 2015 Educational Exhibit Award (3rd Place)

Little Silver GC

NGC Smokey Bear/Woodsy Owl Poster Contest,
Whitney Hobson, New Jersey (Grade 2) 1st Place

GC of Montclair

#17 Lenore Pletcher Trophy, Deborah Moran

Moorestown GC

#3 GCNJ Continuing Project Award \$100
#20 Marguerite and Vincent T. Mulligan
Garden Therapy Trophy
#36 GC of Toms River Trophy
#53 Demarest GC Yearbook Trophy (large club)
#37 Elizabeth GC Flower Show Trophy for finest
Small Standard Flower Show
NGC Award #19Aiii Horticulture Therapy (1st place)

and Certificate of Commendation
CAR 2015 Flower Show Schedule Award for Small
Standard Flower Show 3rd Place

Navesink GC

#61 Garden Club of Long Beach Island
Award \$100
NGC #1Aii Civic Achievement Award
(Certificate of Commendation)

Neshanic GC

#16b Doris L. Cavanaugh Membership Participation
Trophy
#67 GC of Westfield Trophy
#58 Pines Lake GC Trophy - Joyce Elmalis
#45 Patricia Grossi Petite Award Trophy – Aline
Pagliaro
#69 Doris Bryan Educational Exhibit Trophy
#38 Garden Club RFD Trophy
#8 Spade and Trowel GC Trophy
NGC Award #22 for a Holiday Standard Flower
Show Award
NGC Award #44Aii Publicity Press Book Award (1st
Place)
CAR 2015 Publicity Press Book Award (medium club)
2nd Place

New Providence GC

CAR 2015 Yearbook Award (20-29 members) 3rd
Place



Pinelands GC

#26 East Orange GC Trophy
 CAR 2015 Yearbook Award (70-99 members) 1st Place

Rake and Hoe GC

Youth Junior Award #1c Certificate of Merit
 Youth Junior Award #6 Certificate of Merit with Gold Seal
 Youth Intermediate Award #3 Certificate of Merit with Gold Seal
 Youth High School Award #2 Certificate of Merit with Gold Seal

Rolling Hills GC

CAR 2015 Publicity Press Book Award (Small Club) 2nd Place

Seaweekers GC

#23 Violet M. Bennett Environmental Trophy
 #64 Jane S. R. Bersch Trophy
 #65 Ringwood GC Trophy

Shrewsbury GC

NGC Mae Duff Walters Achievement Award for Landscape Design (Overall winner)
 CAR 2015 Yearbook Award (30-44 members) 2nd Place

Terra Nova GC

#14a Hazel Bowne Sternat Civic Beautification Trophy
 #34 Garden Club of New Jersey Award
 NGC Smokey Bear/ Woodsy Owl Poster Contest, Gabriella Politi, New Jersey (Grade 3) 1st Place
 NGC Smokey Bear/Woodsy Owl Poster Contest, Sean Lacko, New Jersey (Grade 4) 1st Place

Warren GC

#15a Myra Brooks Garden Therapy Trophy

West Trenton GC

Anne Chiemlewski, West Trenton GC
 New Jersey Perennial Bloom Award Winner
 CAR Perennial Bloom State Finalist Award
 #28 Membership Award for highest increase in membership (large club)
 #48 Community Garden Club of Hunterdon County Trophy

#52 GCNJ Special Award (large club) \$200
 #11 Myra Brooks Memorial Trophy for Creativity in Flower Arranging – Helga Fontus
 #21 Amelia Stewart Perpetual Trophy - David Chiemlewski
 #29 Glenn Ferrari Memorial Trophy - Joan Naro
 #68 Roberta McNally Table Artistry Trophy - Patricia Bowker
 #4 Helen Hull Trophy
 #5 Mrs. David L. George Trophy
 NGC Award #5 for a Standard Flower Show Award

Garden Club of New Jersey

NGC Award #6 Diii Conservation Certificate of Commendation (Runner-up)

David Earl and George Caruso

Medal of the Garden Club of New Jersey

Ruth Korn, Diana Kazazis, Bob Markey, Cecelia Millea and Jeannie Geremia
 GCNJ Presidential Citations



2015-2016 Yearbooks Excellent with Gold Seal

- | | |
|--|----------------------------------|
| 1. Basking Ridge GC | 34. Navesink GC |
| 2. Belvidere GC | 35. Neshanic GC |
| 3. Bayberry GC | 36. New Providence GC |
| 4. Central Sussex GC | 37. Oceanport GC |
| 5. Chester GC | 38. Pinelands GC |
| 6. Community GC
of Hunterdon County | 39. Pines Lake GC |
| 7. Country GC | 40. Ramsey Area GC |
| 8. Demarest GC | 41. Ringwood GC |
| 9. Dogwood GC | 42. Rockaway Valley GC |
| 10. Elizabeth GC | 43. Rocky Brook GC |
| 11. Fairways GC | 44. Seaweeders GC |
| 12. GC of Cranford | 45. Shrewsbury GC |
| 13. GC of Essex Fells | 46. Sundial GC |
| 14. GC of Fair Haven | 47. Terra Nova GC |
| 15. GC of Hunterdon Hills | 48. Town and Country GC |
| 16. GC of Long Beach Island | 49. Warren GC |
| 17. GC of Long Valley | 50. Washington Valley GC |
| 18. GC of Metuchen | 51. West Trenton GC |
| 19. GC of Montclair | 52. Women Gardeners of Ridgewood |
| 20. GC of Mountain Lakes | |
| 21. GC RFD | |
| 22. GC of Spring Lake | |
| 23. GC of Toms River | |
| 24. GC of Watchung | |
| 25. GC of Westfield | |
| 26. Green Thumb GC | |
| 27. Haddonfield GC | |
| 28. Home GC of Morristown | |
| 29. Jumping Brook GC | |
| 30. Little Silver GC | |
| 31. Maplewood GC | |
| 32. Moorestown GC | |
| 33. Mount Laurel GC | |

2015-2016 Yearbooks Excellent

1. Allenhurst GC
2. All Seasons GC
3. Bridgewater GC
4. GC of Mount Tabor
5. Piscataway GC
6. Rolling Hills GC
7. Royal GC
8. Short Hills GC
9. Tenafly GC



OUR ENVIRONMENT: CONSERVING WATER

Our **water resources** are not unlimited. They are **affected every day** by precipitation, population growth, economic development and pollution. On the average, each person uses 200 gallons of water per day. Half of this water is used for **landscaping and gardening**. Conserving water in the garden starts with selecting appropriate plants for your climate, soil and light conditions. Use **native plants and shrubs** — they require less water and are drought and insect resistant. **Mulching** not only holds water in soil, but controls weeds. Water during the coolest part of the day, early morning is best. Use **soaker hoses** and trickle irrigation systems; by delivering water directly to the roots, they reduce the amount of water used by 20-50%. Do not water on windy days because up to 50% of the irrigation water may evaporate. Check for leaks in hoses and sprinkler systems. Use a broom instead of a garden hose to clean sidewalks and driveways.

In your kitchen: install a **flow restrictor** on the faucets. Do not leave water running while washing fruits and vegetables; use a bowl. **Pre-rinsing dishes**, prior to loading into dishwasher, is an **unnecessary and wasteful** use of water. Wash only full loads in dishwashers and washing machines. **Avoid disposals**; instead compost and recycle.

In your bathroom: take **short showers** instead of baths. **Do not run water** continuously while brushing teeth, shaving or washing. **Check toilets, sinks** for leaks or drips. A dripping faucet can waste 20 gallons of water per day. Consider purchasing a front loading washing machine; it saves 20-30 gallons of water per load. If you **wash clothes in cold water**, it not only saves energy but your colors stay brighter.

Some water statistics:

Taking a shower — 5 gallons per minute

Flushing the toilet — 4.7 gallons (conventional), 1.6 gallons (low-flow systems)

Brushing teeth — 1 gallon

Washing clothes — 30-50 gallons

Washing dishes — 16 gallons per dishwasher load

Washing car — 5.8 gallons per minute

Lawn sprinkler — 660 gallons per 2 hours

If each person in this country used just 10 gallons of water less each year, we'd save over 2 billion gallons! Please use water wisely, every drop counts.

It is up to us to **preserve and protect our world** —
because it is the only one we have.

Ingrid Justick
732-922-2935



2016 Scholarship Awards

Announced at the
2016 Annual Meeting in Bridgewater--June 9, 2016



With all the exciting events at GCNJ's Annual Meeting, the awarding of our scholarships is certainly one of the highlights. The basis of these awards is academic excellence, commitment to career, character, involvement and accomplishments in extracurricular activities and financial need. The winners are outstanding students who are very dedicated to their chosen field of study. GCNJ awarded 12 scholarships this year. Our Endowment Funds and money given to the Scholarship Funds from garden clubs and garden club members have allowed us to distribute \$13,500.

The selection of the first three scholarships listed was determined by the Landscape Architecture Department – School of Environmental & Biological Sciences at Rutgers University.

The winner of the **Elizabeth S. Merrian Scholarship for Landscape Design or Ornamental Horticulture** of \$1,000 is Victoria Kayes. Victoria is currently finishing the last two semesters of her Landscape Architecture undergraduate studies at Rutgers University. She has served as a Junior Representative and been an active member in the New Jersey Student Chapter of Landscape Architects for almost two years. For her entire time at Rutgers, she has worked to pay for school, and she anticipates graduating with honors. Her future goals include finding an organization or design firm that focuses on ecological and green design. She is also determined to become an expert of native species and hopes to travel to American landscapes, built and unbuilt, where she can observe and further enrich her understanding of ecology and design.

The **Florence S. McNeill Landscape Architect**

Scholarship of \$1,000 was awarded to Tsz Lok Eunice. Tsz is currently a third-year undergraduate student working towards a Bachelor's degree in Landscape Architecture. Aside from her studies, she works at the Rutgers Cooperative Extension Water Resources Program. As an intern there, she helps New Jersey communities address water resource issues using green infrastructure. After graduation, Tsz wishes to return to her home in Hong Kong and apply her knowledge of design and green infrastructure in the city. She aspires to use landscape architecture as a force for positive change in addressing the programs and stigma surrounding homelessness. This summer, she will begin her senior thesis centered on the topic of designing urban landscapes to support the homeless.

The recipient of the **Dr. Charles H. Connors Scholarship** of \$1,000 is Samantha Dreher. She is entering her senior year at Rutgers University and will have one more year of study to finish her double major. Sam's majors are in both Landscape Architecture and Environmental Planning. She hopes to be an effective force in proposing environmental justice for lower income communities.

The **Laurence S. Reade Scholarship** of \$1,000 was awarded to Anastasia Giordano. She is a freshman at Kean University with a 4.0 grade point average. Anastasia is enrolled in the New Jersey Center for Science Technology and Math. Her goal after graduation is to become a high school biological science teacher. Anastasia is currently in a 5-year program whose completion will reward her a Bachelor's degree in 2019 and a Master's degree in Secondary Education in 2020. She is still active within the Warren Hills Future Farmers of America Chapter and the Warren County 4H program. Last year she worked at Poplar Wood Farm, an organic farm in Port Murray, NJ.

The **Gene Oneal Scholarship** of \$1,000 was awarded to Thomas Johnston. He will be attending UC – Berkeley as a freshman. Tom will be enrolling in the Sustainable Environmental Design Program. He wants to work with people to create a cleaner future by embracing new environmental technology. He also will be on the UC-Berkeley Rowing Team



(which is rated as the No. 2 – Division 1 team in the country).

The **Helen Hull Scholarship** of \$1,000 was awarded to Kacey Walsh. After two years at Middlesex County College, she plans to attend the University of Maine and will major in Marine Biology with a concentration in Environmental Science. Kacey plans to eventually receive her PhD in Marine Biology.

The **Leon Shen, PhD. Esq. Scholarship** of \$2,000 was again awarded to Morgan Furze. She is a PhD student at Harvard University in the Department of Organismic and Evolutionary Biology. Her occupational goal is to be an environmental consultant or education outreach coordinator at an environmental nonprofit. She definitely has a passion for ecology and exploring forest ecosystems. Morgan possesses the maturity, commitment and skills needed to conduct high-impact research and has a near perfect GPA at Harvard.

The winner of the **Life Members Scholarship** of \$1,000 was Daniel Ilkow. He will be attending Rutgers University majoring in Landscape Design/Architecture. His goal after graduation is to operate his own successful landscape design company. Dan was voted into Cranford High School's Math Honor Society and was accepted into the National Honor Society. He has been working at Dreyer Farms for a few years and has also been a baby sitter, gardener, pot sitter and house sitter for local neighbors. And, by the way, he has a grade point average of 4.11.

The **Linda Kroll Memorial Scholarship** of \$1,000 was awarded to Maria Karahalios. She is attending Coastal Carolina University, majoring in Marine Science and minoring in Political Science. Maria volunteers at the Karen Nash Memorial Butterfly Garden. Her goals are simple: to help conserve life on our incredible planet and protect them through policy and education.

Rutgers Gardens Intern Scholarship is a new scholarship that is being offered by the Garden Club of New Jersey. It is a \$1,000 scholarship offered yearly. The recipient will work at the Rutgers Gardens during the summer of the year the scholarship is awarded. The \$1,000 scholarship amount is to be dedicated to the education credit expense of the recipient. This year's winner is Emily Aquino. We will meet her at our fall meeting when she will tell us about her summer experience.

Last but not least...

The **Former GCNJ President's Scholarship** of \$1,500 and The **Dorothy Campbell Scholarship** of \$1,000 was awarded to Bryan Kiel who is a junior at Fordham University. His occupational objective is working in Urban Planning and Sustainable City Development. He became a volunteer with a community garden right on campus. He was involved with a gardening workshop that was offered for local middle schoolers. Kids were fascinated by the organic process; especially the hundreds of worms involved. Outside of Fordham, Bryan has worked with children at a shelter, planting veggies that the children grew.

He studied in Copenhagen, Denmark, where he focused on sustainable development. (Bryan also received a scholarship from National Garden Clubs, Inc. for \$4,000).

Congratulations to all the scholarship recipients. The Garden Club of New Jersey is very proud of all our winners and their amazing accomplishments.

Onnolee Allieri
Scholarship Chair
callieri@aol.com



Tricyrtis: Tantalizing Toad Lilies



yellow 'Yellow Sunrise'.

It blooms in late summer to mid-autumn along arching stems up to 2.5 feet tall. It is a good companion plant when planted along with lily turf, hosta, ferns, hellebores and fall anemones. Use in beds and borders as a specimen plant or focal point. It is best to plant where it can be enjoyed close up.

Noteworthy characteristics: These herbaceous perennials are from moist woodlands and high elevations from eastern Asia to the Philippines. They make subtle, but exotic, specimens for woodland borders. Foliage, in some varieties, is speckled, gold,

or variegated.

Care: Grow in moist, but well-drained soil in partial to full shade. Morning sun is ideal. Established plants will tolerate some drought. Mulch plants in cold climates with little snow cover, and site in a sheltered location to protect blossoms from early frosts. It is a low maintenance plant.

Propagation: Sow seed when fresh in a cold frame. Divide when still dormant in early spring. It spreads by underground rhizomes.

Problems: Slugs, snails, rabbits will nibble on new growth.

Deer Resistance: Yes

Cold Resistance: *Tricyrtis formosana* is hardy to Zone 5, *Tricyrtis latifolia* is hardy to Zone 4, *Tricyrtis hirta* is hardy to Zone 4.

Alice Dickson
Horticulture Chair
Aliced922@gmail.com

The Frelinghuysen Arboretum Fall Calendar



LIFTING & DIVIDING PERENNIALS AT BAMBOO BROOK

Saturday, September 10 • \$15.

Learn timing, technique and how to rejuvenate your garden in this hands-on workshop.

This program eligible for 2.0 Rutgers Master Gardener CEU's

PRESHERBVATION

Sunday, September 11 • \$35.

Make and take four different and delicious bottles filled with herbal goodness straight from our garden!

FOR FAMILIES: SCARY PLANTS, SCAREDY PANTS

Saturday, October 22 • \$15. per family

Get your HallowGreen spirit on and explore carnivorous plants, plant one to take home, learn about the powers of garlic, and more. Ages 6+

A GARLIC PRIMER

Saturday, November 5 • \$15.

If you love the taste of garlic, why not grow your own? Learn garlic's fascinating history, and all the fool-proof tips for planting, harvesting, and curing it. Then purchase some unusual cultivars.

This program eligible for 2.0 Rutgers Master Gardener CEU's



Gingerbread Wonderland

Celebrating 25 Years of Wonder

December 2- 11, 2016

10am-4:30pm (Monday-Thursday)

10am-7:30pm (Fridays)

10am-4:30pm (Weekends)

TIPS & TECHNIQUES CLASS

Saturday, October 29 • free

Plan to enter? This class is for you!

Entry forms and info at arboretumfriends.org
on October 1, 2016



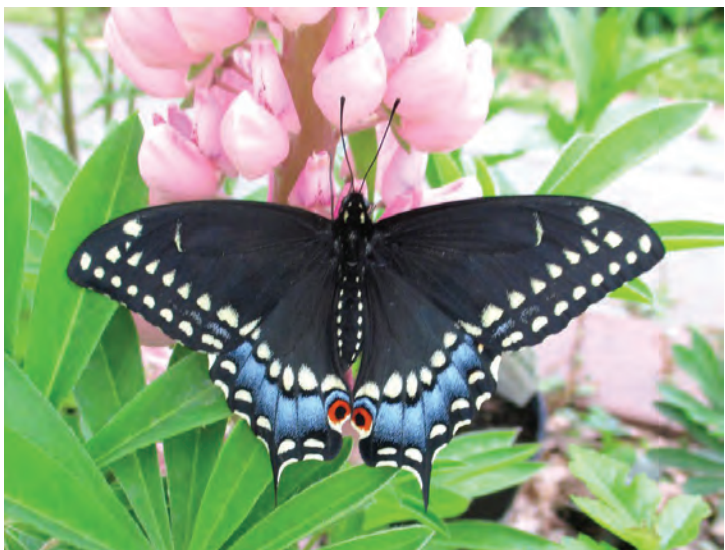
All programs require pre-registration.
Visit arboretumfriends.org for details.

353 East Hanover Avenue • Morristown, NJ 07960
973-326.7603 Registration/Membership

enjoy the
experience
morris county park commission



New Butterflies & BeeGAP Project----GARDENING FOR POLLINATORS



We're launching a brand new pollinator project that is generating buzz from everyone in the gardening community. It is a WIN/WIN strategy for everyone involved on so many levels.

Our GCNJ Butterflies & BeeGAP Committee is laying the groundwork for our garden clubs to partner with our local garden centers in setting up "Pollinator Sections" in garden centers and nurseries. The idea formed after seeing special pollinator sections in a few garden centers in Florida. I was stymied in my efforts to see special sections devoted to pollinators here in New Jersey, and it finally dawned on me that our garden centers and nurseries are way too busy and always playing "catch up" to the vagaries of the weather, staffing and costs involved, even though the idea appealed to them. Hence the perfect solution presented itself and in turn was presented to GCNJ President Susan O'Donnell and the Butterflies & BeeGAP Committee.

We're encouraging our garden clubs to reach out to local garden centers offering them Pollinator signage that GCNJ designs, indicating their host/nectar/pollen plants, trees and shrubs. Committee member Diana Kazazis, President of Rake & Hoe GC, came up with the idea of our committee working with a few garden centers using them as templates for garden clubs and other garden centers to emulate.

The great news is that we received totally enthusiastic responses from the three garden centers we have initially approached, and we're working with them to have the "Pollinator Sections" with accompanying signage set up by September 1, 2016. We are

working to produce simple signage and have settled on 3-5 different butterfly species with one sign showcasing New Jersey's State Butterfly, the Black Swallowtail, one sign for Monarchs and one sign for Eastern Tiger Swallowtails/Great Spangled Fritillaries and Painted Ladies. We will have another sign for three species of bees including bumble bees/honey bees and mason bees plus a sign for three bird families, hummingbirds, song birds and New Jersey's State Bird, Goldfinches. The signs will indicate their specific hosts/nectar/pollen, seeds and fruit requirements. This project will not only educate the gardening public, but garden center staff and garden club members. And it will produce additional business for garden centers, grow garden club membership and best of all, HELP GROW OUR POLLINATOR POPULATION!

Garden clubs will be able to purchase signs through the GCNJ Butterflies & BeeGAP Committee at a wholesale price as we work with G1 Graphics, a printing company, that has donated generously to GCNJ on several programs and projects. Our Butterflies & BeeGAP Committee is working overtime in producing a comprehensive list of host/nectar and pollen plants to incorporate in these signs. Our three initial garden centers include J & J Landscaping & Garden Center, 143 Route 31, Flemington; Hionis Greenhouses, 4 Coddington Road, Whitehouse Station; and Williams Nursery, 524 Springfield Avenue, Westfield. New Jersey's garden clubs and garden centers will be a template for the rest of the country in this WIN/WIN project.

Jeannie Geremia
GCNJ Butterflies & BeeGAP Chair
jeannieg42@earthlink.net



NEW BLUE STAR MEMORIAL MARKERS PLANNED FOR FALL



Two new Blue Star Memorial Markers and a relocation and rededication of an existing marker will keep the GCNJ Blue Star Committee busy this fall!

A relocation of the Highway Marker on Route 36 in Eatontown occurred in June, and the newly established site has been replanted. It will be dedicated on October 1, 2016, at 11 a.m. with the Garden Club of Oceanport planning the ceremony. The marker's new location is just down the road on Route 36, still in Eatontown, at the edge of the Shop Rite parking lot. The new location makes the marker more visible and easily (and safely)

accessible to visitors and the Club's members who will maintain the site. Thanks to Oceanport for their work on this marker, and to the New Jersey Department of Transportation's David Earl and crew for relocating and replanting the site.

Two new markers will add to New Jersey's growing list of memorials. These two will become # 35 and # 36! The Garden Club of Toms River will add a Blue Star Memorial marker to a site on Route 37 (at the entrance to Winding River Park) in Toms River. Their ceremony is planned for November 5, at 11 am. The Garden Club of Long Beach Island is planning a ceremony to dedicate a by-way marker, located on the grounds of the Beach Haven Library and Museum. The date for their dedication will be announced shortly.



It is exciting to have these clubs continue an honored tradition which pays respect to men and women who have served and are serving in our armed forces. The Blue Star Program began right here in New Jersey at the close of World War II, and now is a nationwide program. We look forward to these dedications and to others in the future. If your club would like to know more about how to

bring a Blue Star Marker to your town, please contact GCNJ Blue Star Chair Joan Cichalski, jjcichalski@comcast.net or 732-977-4477

Joan Cichalski
Blue Star Chair

jjcichalski@comcast.net



Be Part of the Story at Drumthwacket

Nestled in Mercer County is New Jersey's White House — Drumthwacket, the governor's official residence. Its story begins in the 1680s. William Penn, the Quaker who founded the colony of Pennsylvania, owned the land. He sold parcels of it to prominent Quaker families, including the Oldens.

Flash forward to 1799. Charles Smith Olden was born in a small farmhouse on the property. He moved to New Orleans and became a successful businessman. He coupled his earnings with his inheritance to buy the property in New Jersey. In 1835, construction began on Drumthwacket. Olden became governor in 1860 thereby becoming the first governor to live at Drumthwacket.

It is believed that the name, Drumthwacket, came from a very popular novel at the time and within that book the name Drumthwacket does appear. It means either to beat the drum or wooden hill-- and for some reason, the name stuck. The house wasn't always so large. Governor Olden built the foyer, parlor and dining room. The next owner built the other additions.

It was Moses Taylor Pyne who purchased the home for about \$15,000 and his architect kept the main core and then added the east and west wings, which included the modern kitchen and library, music room and governor's study. Pyne's granddaughter eventually sold the home in 1941, along with 12 surrounding acres, to inventor Abram Nathaniel Spanel who allowed his engineers to do experiments in the music room.

In 1966, the Spanels sold Drumthwacket to the state of New Jersey to be used as the official

residence of the governor. It took about 15 years to renovate and repair the 18,000-square-foot estate and the Drumthwacket Foundation — a non-partisan non-profit — was formed to ensure that history is preserved accurately for everyone to enjoy. Governor McGreevey has been the only governor to live there for his term of office. Governor Christie uses the residence for official meetings and entertaining.

Each November the Garden Club of New Jersey helps to decorate the house for the days of Drumthwacket's Holiday Open House. Last year Keyport GC, Morristown GC, GC of Mountain Lakes, Somerset Hills GC, Seaweeders GC of Bay Head and Mantoloking as well as the Warren GC and the State Board of GCNJ took on the honor of transforming the mansion, much to the delight of its many visitors.

This year, GC of Mountain Lakes, Warren GC, Keyport GC and West Trenton GC have signed on once more. Tillie Emmert, GCNJ Décor Chair, is still looking for two more clubs to change the look of Drumthwacket so it's ready for the winter holidays. Clubs can join together, if they wish, to perform the magic. This year, as last year, a monetary stipend is available to help each club. The tentative set up date is Monday, November 28, and then the mansion will tentatively be open for self-guided tours on November 30 and December 4, 7, 11, and 14.

Come experience Drumthwacket.

Even better, Be Part of the Story!

Contact Tillie Emmert at temmert14@opton-line.net.



Calendar of Events

JULY, 2016

15,22,29 The Frelinghuysen Arboretum Summer Concerts. www.arboretumfriends.org for details.

SEPTEMBER, 2016

9 Leadership Workshop at Pavilion in Rutgers Gardens . "What's In It For You?" See Page 4.
13 Navesink GC presents a Small Standard Flower Show, "Going Platinum", at The Atrium at Navesink Harbor, 40 Riverside Ave, Red Bank from 1-3pm.
21-24 NGC Board Meeting in Portland, Maine. Tri-Refresher included.
26-27 Tri-Refresher, Portland, Maine.
29-30 Environmental Study Schools at Holly House—see page 5.

OCTOBER, 2016

4,5,7 Gardening Study Schools at Holly House (exam on 7th). See page 6-7.
10 GCNJ Board Meeting at Holly House at 10am.
12 Judges Council at Medford Leas Retirement Center. Joy Erickson, speaker, on "Ohhhhh, to be a perfect Judge" at 10 a.m.
13 Holly Club of Sea Girt Annual Luncheon and Boutique, 11:30am at Spring Lake Golf Club in Spring Lake Heights. Fashion show from Ocean Grove's Emporium, gift basket raffle and 50/50. Cost: \$40. Call 732-449-4043 for reservations.
13 GC of Watchung's fundraiser, "A Scentsational Night", Creating Your Own Fragrance by Sue Phillips at St. Mary's Stony Hill, Murray Hill, 225 Mt. Blvd., Watchung. 7-9pm; Tickets: \$50 in advance/\$60 after 9/13. Contact Colleen at 908-754-5766 for reservation.
18-19-21 Landscape Design School at Holly House (exam on 21st). Contact Alice Dickson at 908-852-3063 for further information. Also see page 6.
23-25 CAR Conference hosted by The Federated Garden Clubs of New York State. Gideon Putnam Hotel, Saratoga Springs, NY.
26-27 Symposium follows the CAR Conference on October 23-25, at same location. Information for both events on CAR website, www.ngcar.org.
27 Warren Garden Club Annual Luncheon at

Hawk Pointe Golf Club, 4 Clubhouse Drive, Washington. Cost: \$45. Guest speaker: Meg Poltorak Keyes –"There are NO rules: 3 Sticks and a Rock". Begins at 11am followed by raffle and speaker. Contact Betty at 908-689-3744 for tickets. See page 23.

NOVEMBER, 2016

5 Garden Club of Toms River Dedication of Blue Star Marker. See page 16.
7 GCNJ Board Meeting at Holly House at 10am.
19 Rutgers Gardens Course, "Digging It—Trees in the Landscape".
30 Tentative date for visiting Drumthwacket in Princeton for holiday cheer. See page 27.

DECEMBER, 2016

4,7,11,14 Tentative dates for Garden Clubs to visit Drumthwacket in Princeton during the holidays. See page 27.
8 GC of LBI's Annual Holiday Tour of Homes with Holiday Boutique and Tea. Tickets: \$45 available after 10/13/16. Includes 5 holiday decorated homes. Contact Ellie at 609-494-3752 or libibille@att.net for tickets. Website is www.thegardencluboflbi.com.

2017

JANUARY, 2017

30 GCNJ Board Meeting at Holly House (Snow Date-Feb. 6)

FEBRUARY, 2017

23-26 State Flower Show at Raritan Convention Center in Edison.

MARCH, 2017

11-19 Philadelphia Flower Show-- Theme is Holland.
27 GCNJ Board Meeting at Holly House at 10 a.m.

APRIL, 2017

12 Judges Council at Holly House.
17 GCNJ Board Meeting at Holly House at 10 a.m.
25,26,27 Flower Show School IV at Holly House. Contact Carol English for more information at 908-931-1326 or overbrook@comcast.net or contact Florence Leyssene, Registrar, at 973-857-1867 or florenceleyssene@gmail.com.



Calendar of Events *(continued)*

MAY, 2017

16-20 NGC Convention in Richmond, VA. P. Allen Smith is speaker.

JUNE, 2017

8 GCNJ Annual Meeting at Bridgewater Marriott, 9am-4pm.
19 GCNJ Board Meeting at Holly House at 10 a.m.

SEPTEMBER, 2017

13-15 Fall Board Meeting in St. Louis, MO.

OCTOBER, 2017

3,4,6 Gardening Study Schools
16 GCNJ Board Meeting at Holly House at 10 a.m.
24,25,26 GCNJ Landscape Design Schools- College Farm Road

NOVEMBER, 2017

6 GCNJ Board Meeting at Holly House at 10 a.m.

2018

FEBRUARY, 2018

16 GCNJ Board Meeting at Holly House at 10 a.m.

MARCH, 2018

26 GCNJ Board Meeting at Holly House at 10 a.m.

APRIL, 2018

11 Judges Council at Holly House
23 GCNJ Board Meeting at Holly House at 10 a.m.

MAY, 2018

9-11 Flower Show School I at Holly House
21-24 NGC Convention in Philadelphia, PA.

JUNE 2018

18 GCNJ Board Meeting at Holly House at 10 a.m.

SEPTEMBER, 2018

25-30 NGC Fall Board Meeting

OCTOBER, 2018

2-5 Garden Study School at Holly House
9-10 Symposium
23-25 Landscape Design School at Holly House
31 Judges Council at Holly House

2021

NGC Convention in New Jersey

